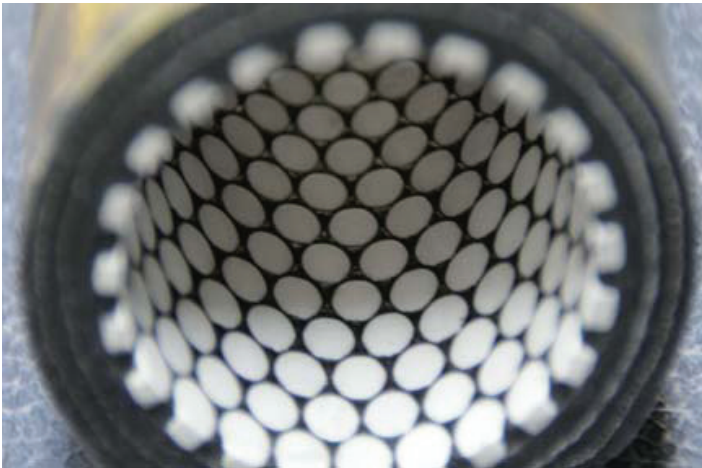


CeramFlex™

Ceramic-Lined Flexible Hose

Erosion-resistant ceramic-lined hose for aggressive services

Ceresist CeramFlex™ Series ceramic-lined flexible hoses are ideal for use in highly aggressive services where conventional unlined rubber hoses require frequent replacement. CeramFlex™ hoses may also be used to isolate mechanical vibration or to connect non-stationary equipment. Eliminate unscheduled shut-downs, increase production throughput, and increase profits!



Wear Resistant

Our fine-grain alumina ceramic lining is 12x more wear-resistant than steel, and performs far better than plain rubber hose under shallow-angle or sliding particle abrasion. The ceramic wear segments are formed into a very uniform, consistent, and smooth internal lining, which also reduces pressure loss, turbulence, and erosion.

Impact Resistant

Severe particle impact will not harm the ceramic internals; the impact force is transferred through the ceramic and dissipated through the rubber lining. Erosive wear is therefore dramatically reduced.

Highly Flexible

The cylindrical alumina wear segment design and precise arrangement within the rubber matrix allows a generous amount of flexibility without adverse effects on erosion resistance.

Corrosion Resistant

Our grade of rubber has been specifically selected to offer a wide range of corrosion resistance against virtually all harsh chemicals typically found in slurries.

Variety of End-Connections

End-connections may be specified to suit your particular installation. Standard connections include fixed flanges, rotating flanges, threaded, and plain end. Contact us for any other type of end-connection.

Custom Lengths

The CeramFlex™ hose may be made to any continuous length up to 32 feet. Longer lengths require multiple interconnected hoses.



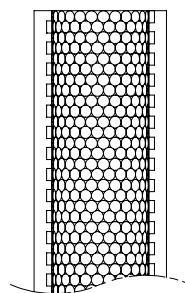
Technical Information

Dimensions

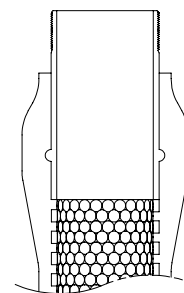
Units: inches

Size (inch)	I.D. (inch)	O.D. (inch)	Max Length (ft)	Min Bend Radius (inch)
1	1.00	1.65	32 LF	20
1¼	1.25	1.97	32 LF	25
1½	1.50	2.20	32 LF	30
2	2.00	2.83	65 LF	40
2½	2.67	3.70	65 LF	54
3	3.00	4.13	65 LF	60
3½	3.27	4.72	65 LF	64
4	4.00	5.51	65 LF	80
6	6.00	7.48	65 LF	120
8	7.64	9.25	32 LF	153
10	9.65	11.42	32 LF	193
12	11.77	13.78	32 LF	235

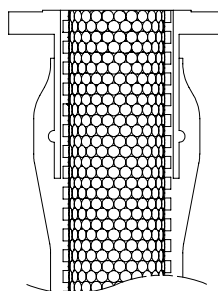
Standard End-Connections



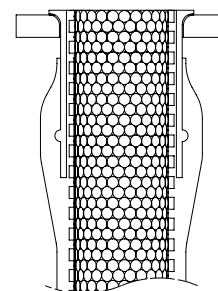
Plain End



Threaded-End



Fixed Flange



Rotating Flange

Additional end-connections - such as grip-lock and twist-claw - are also available. Contact us for any custom requirements.

Operating Parameters

Size Range	1" to 12"
Maximum Operating Pressure	150 psig
Maximum Operating Temperature	250° F
Maximum Continuous Length	32 or 65 Linear Feet



ISO 9001:2008
Certified



176 East 7th Street, Paterson, New Jersey 07524-1609 • (800) 219-4945 • (973) 345-3231 • Fax: (973) 345-3066
sales@ceresist.com • www.ceresist.com

CMFLX-032813