

Wear-Resistant Ceramic Tiles

Product Catalog

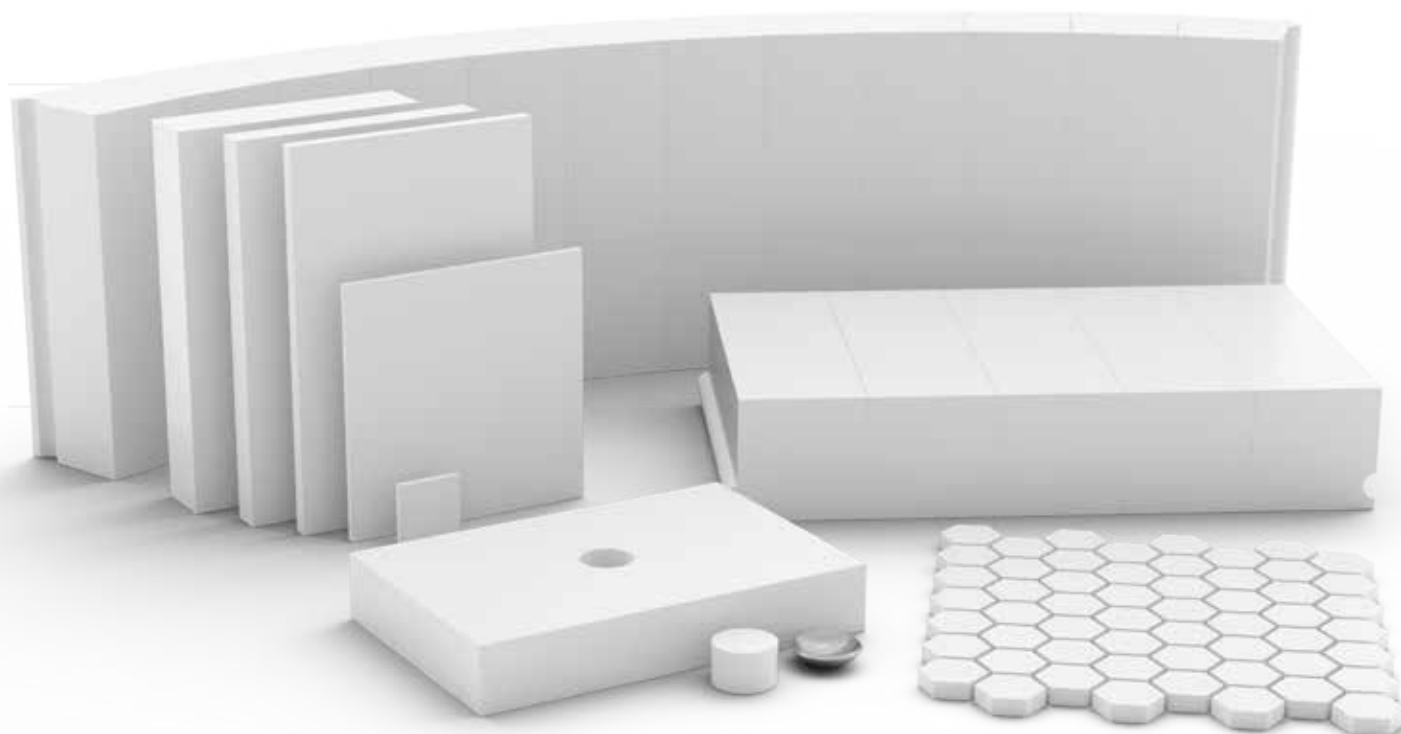


Wear-Resistant Solutions

Fine-Grain Alumina Ceramic

Ceresist's CER-1200 fine-grain alumina ceramic is next to diamond in hardness and outlasts steel by 12 times and Ni-hard by 5 times. Our wear-resistant products are a long-term, maintenance-free solution in systems that experience rapid degradation due to sliding abrasion, erosion, and impact - even in highly corrosive or high-temperature services.

Ceresist is a global supplier and manufacturer of wear-resistant products. Extending equipment life, reducing down-time, and lowering maintenance costs for our customers are our primary focus. Our process engineers are ready to assist you in specifying the correct wear-resistant solution for your system.



The right choice for your application

ISO-9001:2008 Certified

Ceresist is an ISO-9001:2008 company; from the quoting stage through to application support and delivery, our customers are assured that every product is consistently of the highest quality and delivered on-time according to your requirements.

Direct or Wholesale

Ceresist sells direct to end-users as well as to distributors. Our high volume and turnover of product allows our pricing to be the most competitive in the industry. We can therefore accommodate any size project- from a few tiles or mats to annual blanket orders.

Industry-Standard Tolerances

All wear-resistant tile and mat products are manufactured to an industry standard as-fired tolerance of $\pm 1.5\%$ of dimension or better.

The Right Company

Ceresist designs, manufactures, and markets ceramic and wear-resistant products. Our decades of experience in providing our customers with successful ceramic solutions allows us to provide the most economical and long-term optimization of any wear application.

Quick Delivery

Most orders ship from stock; a comprehensive inventory of wear-resistant products is maintained in our New Jersey facility to accommodate just about any size order.

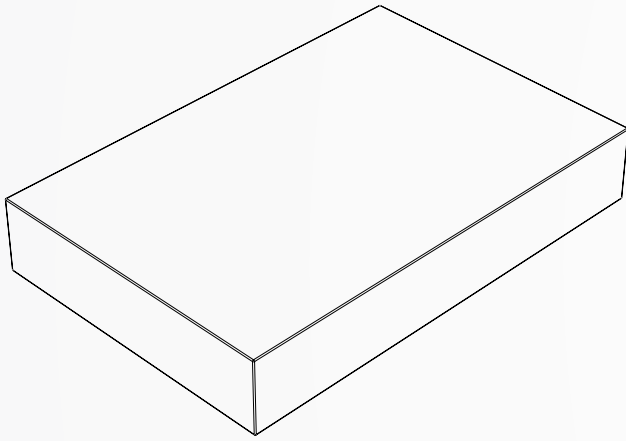
Industries Served

- Aggregate & Quarry
- Asphalt
- Bulk Solids
- Cement
- Chemical
- Coal Preparation
- Dust Collection Systems
- Glass & Frit
- Grain Handling
- Iron and Steel
- Mineral Processing
- Mining
- Oil & Gas
- Pneumatic Conveying
- Power Generation
- Pulp & Paper
- Roofing Materials

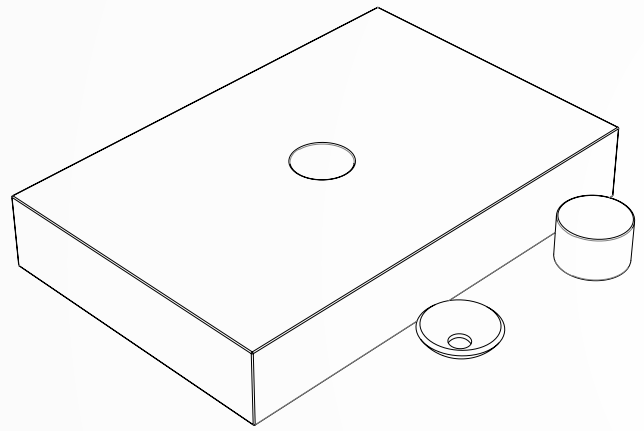
CER-1200 Properties

Ceramic Composition	90% Fine-Grain Alumina
Apparent Density	3.60 g/cc ²
Flexural Strength	338 MPa
Compressive Strength	2,482 MPa
Elastic Modulus	276 GPa
Hardness	1,058 kg/mm ²
Poisson's Ratio	0.22
Thermal Conductivity	16.7 W/m °K
Coefficient of Thermal Expansion	8.1 x 10 ⁻⁶ / °C
Maximum Temperature Limit	1,500° C
Average Grain Size	4 micron
Porosity / Water Absorption	0%

Plain Tile



Weldable Tile



1/8" Thickness

4 x 1	PAT400100125
4 x 2	PAT400200125
4 x 4	PAT400400125

1/4" Thickness

1 x 1	PAT100100250
2 x 2	PAT200200250
4 x 1	PAT400100250
4 x 4	PAT400400250
6 x 1	PAT600100250
6 x 2	PAT600200250
6 x 4	PAT600400250

3/8" Thickness

4 x 1	PAT400100375
-------	--------------

1/2" Thickness

3 x 2	PAT300200500
4 x 1	PAT400100500
4 x 2	PAT400200500
4 x 3	PAT400300500
4 x 4	PAT400400500
6 x 1	PAT600100500
6 x 2	PAT600200500
6 x 4	PAT600400500
9 x 4 1/2	PAT900450500

1" Thickness

4 x 2	PAT400200100
4 x 3	PAT400300100
4 x 4	PAT400400100
6 x 1	PAT600100100
6 x 2	PAT600200100
6 x 4	PAT600400100
9 x 4 1/2	PAT900450100

1/4" Thickness

6 x 4	WT600400250
-------	-------------

1/2" Thickness

4 x 2	WT400200500
4 x 3	WT400300500
4 x 4	WT400400500
4 1/2 x 4 1/2	WT450450500
6 x 2	WT600200500
6 x 4	WT600400500
9 x 2	WT900200500
9 x 4 1/2†	WT900450500

1" Thickness

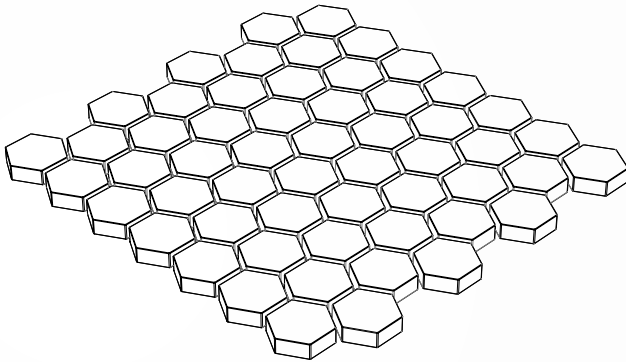
4 x 2	WT400200100
4 x 3	WT400300100
4 x 4	WT400400100
4 1/2 x 4 1/2	WT450450100
6 x 2	WT600200100
6 x 4	WT600400100
9 x 4 1/2†	WT900450100

2" Thickness

6 x 4	WT600200200
-------	-------------

† Tiles provided with two weld holes

Hex Mat



1/8" Thickness

6 x 6	HM600600125
-------	-------------

1/4" Thickness

6 x 6	HM600600250
12 x 6	HM1200600250

3/8" Thickness

6 x 6	HM600600375
-------	-------------

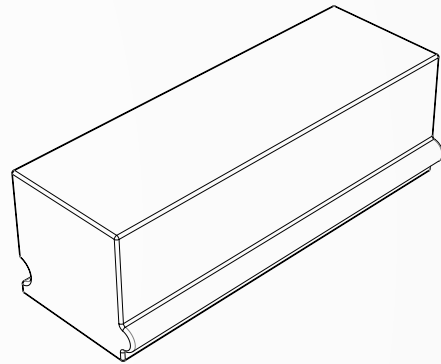
1/2" Thickness

6 x 6	HM600600500
-------	-------------

1" Thickness

6 x 6	HM600600100
-------	-------------

Ball Mill Tile



Standard

6 x 2 x 1 1/2	BM150050040
6 x 2 x 2	BM150050050
6 x 2 x 2 3/8	BM150050060
6 x 2 x 2 3/4	BM150050070

Half-Length

3 x 2 x 1 1/2	BM075050040
3 x 2 x 2	BM075050050
3 x 2 x 2 3/8	BM075050060
3 x 2 x 2 3/4	BM075050070

Filler

6 x 1 x 1 1/2	BM150025040
6 x 1 x 2	BM150025050
6 x 1 x 2 3/8	BM150025060
6 x 1 x 2 3/4	BM150025070

Trapezoidal Standard

6 x 1 3/4 x 1 1/2	BMT150045400
6 x 1 3/4 x 2	BMT150045500
6 x 1 3/4 x 2 3/8	BMT150045060
6 x 1 3/4 x 2 3/4	BMT150045070

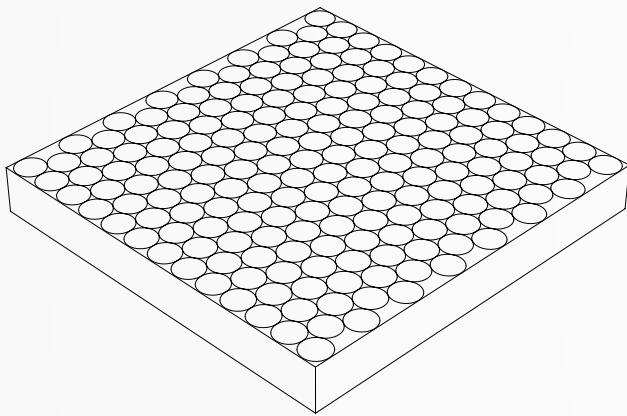
Trapezoidal Half-Length

3 x 1 3/4 x 1 1/2	BMT075045400
3 x 1 3/4 x 2	BMT075045500
3 x 1 3/4 x 2 3/8	BMT075045600
3 x 1 3/4 x 2 3/4	BMT075045700

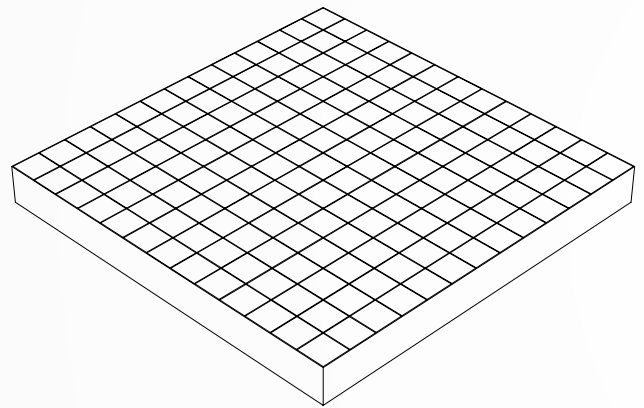
Trapezoidal Filler

6 x 7/8 x 1 1/2	BMT150022400
6 x 7/8 x 2	BMT150022500
6 x 7/8 x 2 3/8	BMT150022060
6 x 7/8 x 2 3/4	BMT150022070

Vulcanized Cylinder Mat



Vulcanized Tile Mat



Ceramic Cylinders

0.79" Thickness

3.9 x 3.9	CM1001000020
9.8 x 9.8	CM2502500020
11.8 x 11.8	CM3003000020
13.2 x 16.5	CM3354200020
15.4 x 15.4	CM3903900020
19.7 x 19.7	CM5005000020

Available Thicknesses

1.26" Thickness

3.9 x 3.9	CM1001000032
9.8 x 9.8	CM2502500032
11.8 x 11.8	CM3003000032
13.2 x 16.5	CM3354200032
15.4 x 15.4	CM3903900032
19.7 x 19.7	CM5005000032

Hex Ceramic Tile

1.18" Thickness

11.8 x 11.8	HRM3003000030
19.7 x 19.7	HRM5005000030

Rectangular Ceramic Tile

1.26" Thickness

11.8 x 11.8	SRT3003000032
11.8 x 16.1	SRT300410032
15.7 x 15.7	SRT4004000032

Rectangular Ceramic Tile

2.36" Thickness

19.7 x 19.7	SRT5005000060
-------------	---------------

Rectangular Ceramic Tile

2.44" Thickness

11.8 x 11.8	SRT3003000062
19.7 x 19.7	SRT5005000062

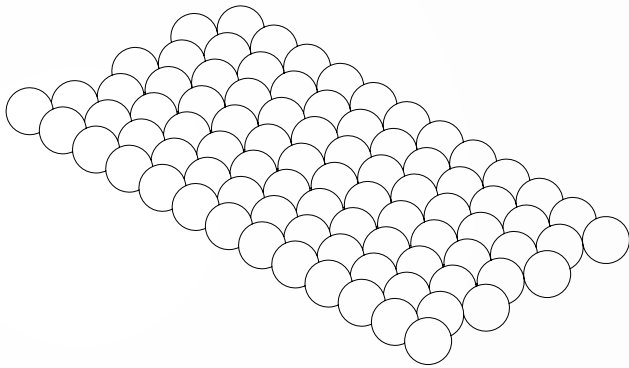
Square Ceramic Tile

3.9 x 3.9	SM1001000...
9.8 x 9.8	SM2502500...
11.8 x 11.8	SM3003000...
13.2 x 16.5	SM3354200...
15.4 x 15.4	SM3903900...
19.7 x 19.7	SM5005000...

Available Thicknesses

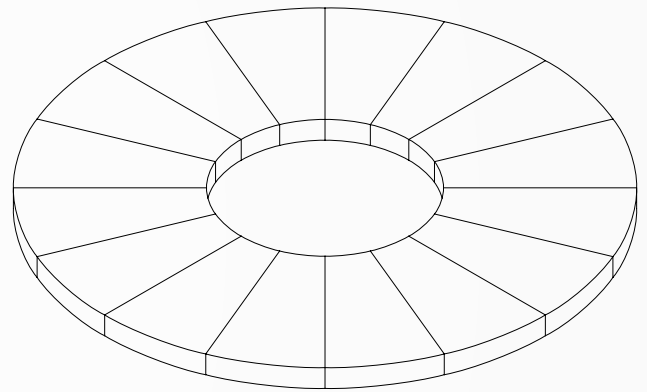
0.39	...010
0.47	...012
0.59	...015
0.63	...016
0.71	...018
0.79	...020
0.94	...024
1.18	...030
1.26	...032

Ball Grinding Media



Diameter	
15 mm	AGB15
20 mm	AGB20
25 mm	AGB25
30 mm	AGB30
40 mm	AGB40
50 mm	AGB50
60 mm	AGB60
70 mm	AGB70

Pre-Engineered Linings



Ceresist will custom-engineer ceramic linings to fit any system. An easy-to-follow installation drawing that maps the location of each numbered tile is provided with every kit. Diamond-cutting of standard ceramic tiles is eliminated, which saves a considerable amount of labor and downtime.

Contact your sales representative for additional details.

Additional Wear-Resistant Products:

Ceramic Orifice Plates



Ceramic Chokes



Ceramic-Lined Pipe & Fittings



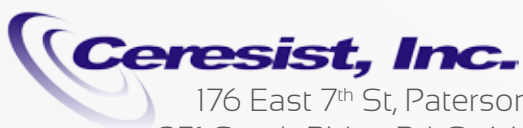
Ceramic Ball Valves



Ceramic-Lined Flexible Hose



Custom Parts and Retrofits



176 East 7th St, Paterson, NJ 07524 Tel: 973-345-3231 Fax: 973-345-3066
351 South Ridge Rd, St. Mary's, PA 15857 Tel: 814-594-9896 Fax: 814-834-1430
sales@ceresist.com www.ceresist.com

